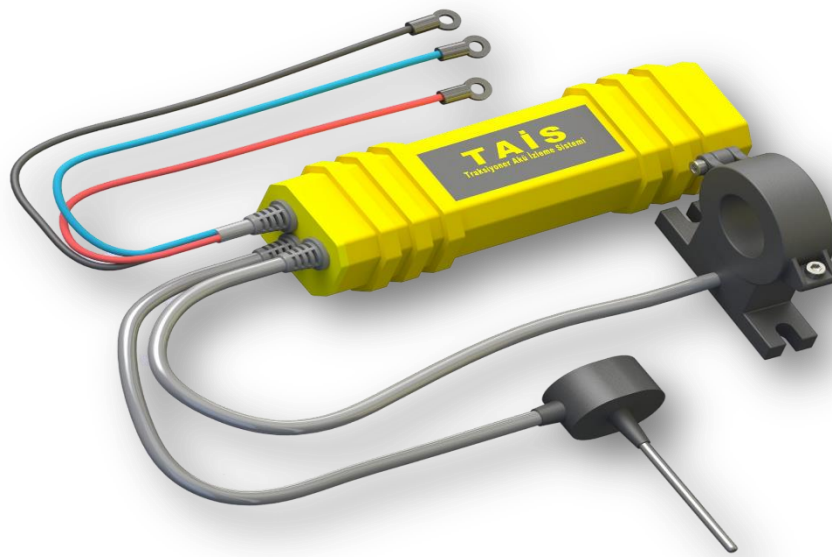


ALPTAIS

TRACTION BATTERY MONITORING



ALPTAIS is a high-performance wireless battery monitoring system applied for traction batteries that can monitor critical parameters of batteries during operation.

ALPTAIS eliminates unplanned interruptions. It maximizes the usage time and helps you to reduce the operating costs. It is also effective in extending the life of your batteries by allowing remote monitoring of battery parameters in your fleet.

ALPTAIS continuously measures the parameters of the battery it is connected. Analyzes and evaluates these measurements. It transfers the measured data and evaluation results to the web server via Wi-Fi. In cases where there is no Wi-Fi access, it saves the data it receives in its memory. When it provides Wi-Fi access, it transmits the recorded data to the WEB server.

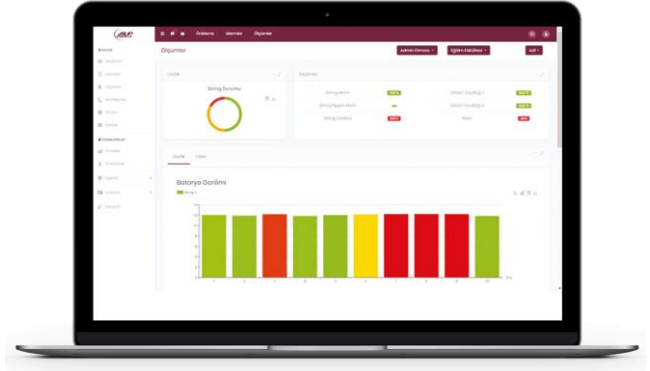
System; It measures Battery Total Voltage, Midpoint Voltage, Electrolyte Level, Battery Temperature and Battery Current parameters. These parameters are measured in all situations that the battery is Charged, Discharged and Idle.

➤ Features

- Wide Voltage Range (12V-96V)
- Unbalanced with Midpoint Voltage Measurement
- Finding Cells
- Wireless Connection (Wi-Fi)
- Permanent Registration Memory
- Data Retrieval without Physical Intervention
- Easy and Quick Installation
- No Software Installation Required
- Warning / Alarm Notification Via E-Mail
- Status Notification via LED on Device
- Ambient Temperature Reading (Option)
- Mobile 3G / GPRS (Option)

➤ Reporting

- Battery Instant Data (Battery No, Type, Ah etc.)
- Used / Remaining Battery Cycles
- Charge, Discharge and Idle States
- Number and Period of Deep Discharge
- Charge / Discharge Current (Ah)
- Charge / Discharge Power (KWh)
- Number and Period of Low Electrolyte Situations
- High Temperature Exceeding Number and Duration
- Energy in / out of the Battery Calculation
- Report Output



➤ Benefits

- Extends battery life, reduces service and maintenance costs
- Monitors battery performance throughout its lifecycle
- Helps supervise and plan maintenance operations
- Helps identify and solve battery / forklift site problems
- It prevents unnecessary battery purchase
- Reduces energy costs
- Increases energy efficiency



➤ TAIS Technical Details

MODEL	TAIS
Current Monitoring	Discrete Core Hall Sensor
Temperature Monitoring	External Thermistor
Electrolyte Level Monitoring	Adjustable Length Special Design Sensor
Battery Rated Voltage	12 V - 96 V
Operating Voltage	12 V - 120 V
Current Measurement	+/- 1000A (at 1 A Resolution)
Voltage Sensitivity	0.1 V
Real Time Clock (RTC)	Keeping and Storage of Measured Parameters According to Time
Operating Temperature	-25°C ~ + 60°C (-13°F ~ + 140°F)
Dimensions	130 mm (L) x 37 mm (W) x 35 mm (H)
Wireless Connection	Wi-Fi (3G / GPRS Option)
Data Recording	10.000 Event Records
Data Collecting	Cloud Based Web Server
Wireless Range of Access	~ 50 m
Enclosure	Water and Acid Resistant
Power Consumption	0.1 Watt
Protection	Internal Fuse and Reverse Polarity Protection

ALPAIS BATTERY MONITORING SYSTEM

Istanbul

Yalı Mh. Top Selvi Cd. Mai Residence No:100-B
Kat:15 Daire : 128 PK:34873 ISTANBUL / TÜRKİYE
Tel: +90 216 561 90 73-74 (pbx) 444 66 21
Fax: +90 216 561 51 32

Ankara

Ankara Teknopark TGB Yerleşkesi İvedik OSB Mah. 2224 Cd.
No:1/1 E Blok Zemin Kat (E-Z09) ANKARA / TÜRKİYE
Tel: +90 216 561 90 73-74 (pbx) 444 66 21
Fax: +90 216 561 51 32